



design makes a difference

Professional eye

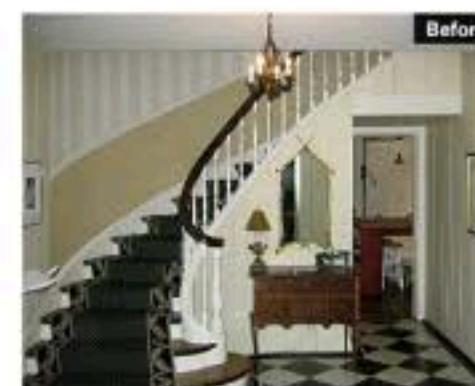
A well-executed interior design is likely to be the sum of the attention paid to the tiny details

Years spent studying, coupled with practical experience, mean a professional in a particular field will have acquired a valuable knowledge base and a strongly practical insight.

Drawing on his years of experience, architect Gary Beyerl of Burns & Beyerl Architects transformed this home. The entrance hall had been dark and felt cramped. Reconfiguring the layout, and applying consistent detailing has created an open, spacious ambiance and a sense of harmony with the rest of the home.

Strategies such as removing some small closets, curving the top of the stair and enlarging the opening to the second floor give a feeling of space in the entry, while the new second-level gallery adds interest to the upstairs hallway. The wider opening also allows light from a window above the front entrance to flood both the hall and gallery with natural light.

Glass French doors into the dining room further lighten the hall, and white-painted, paneled walls featuring a Georgian trim motif are classic, yet fresh.



Before Facing page: Architect Gary Beyerl worked with interior designer Larry Boeder to remodel this entrance hall. A simple, fresh design featuring white-painted paneling, Georgian motifs and dark-stained floors replaces a busy interior with striped wall coverings, painted panels and a checkerboard floor.

Above: Extra natural light floods into the hall through French doors and a new opening above the stairs. The low, square opening to the kitchen has been replaced with a barrel-vaulted ceiling, which also helps to make the hallway seem more spacious. Photography by Nathan Kirkman.